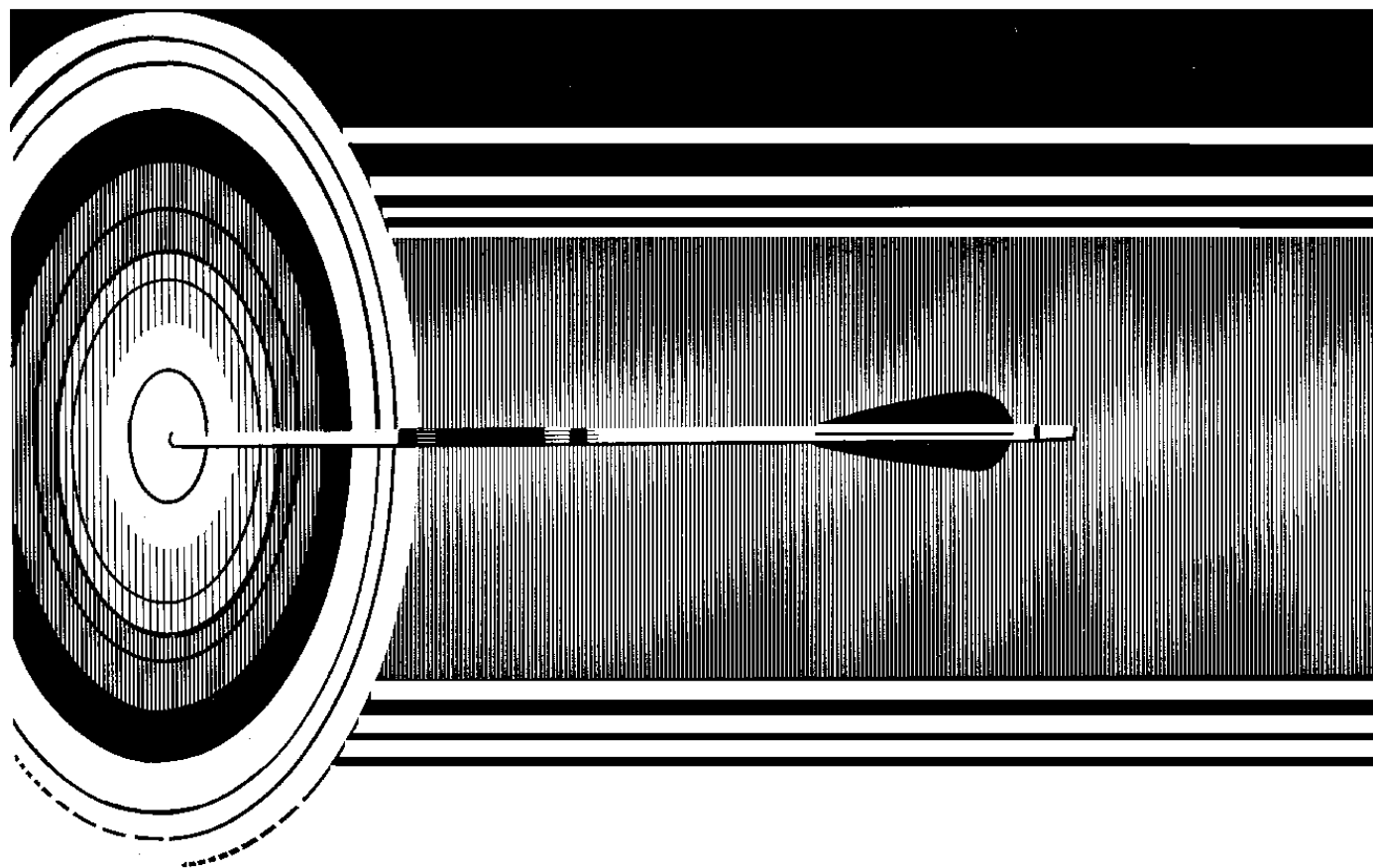


# Institutional Effectiveness

Long Beach City College, July 2005

---



data collected through 2003-04

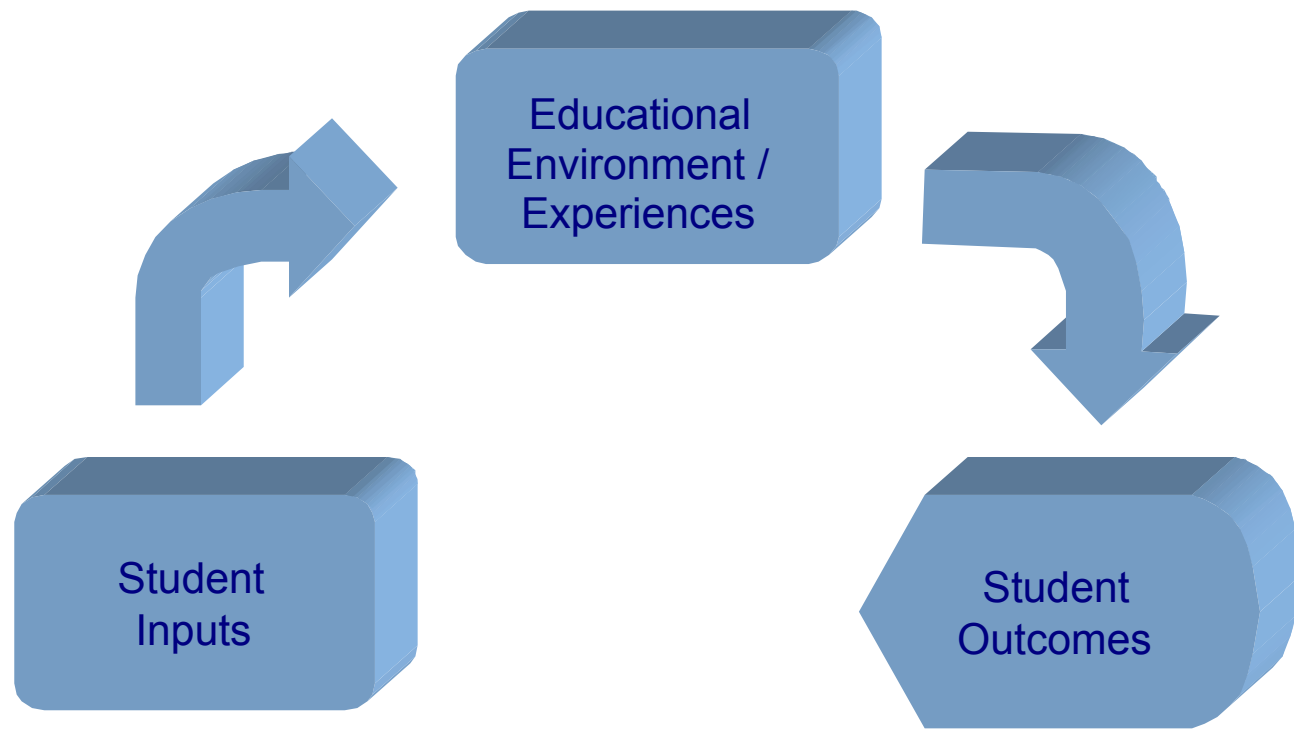
# Institutional Effectiveness

---

- American Association of Community Colleges (AACCC) Outcome Dimensions Model
  - Developmental Skills (Basic Skills)
  - Workforce Development (Economic Development)
  - General Education
  - Student Progress
  - Transfer Preparation
  - Outreach
- Student Learning Outcomes

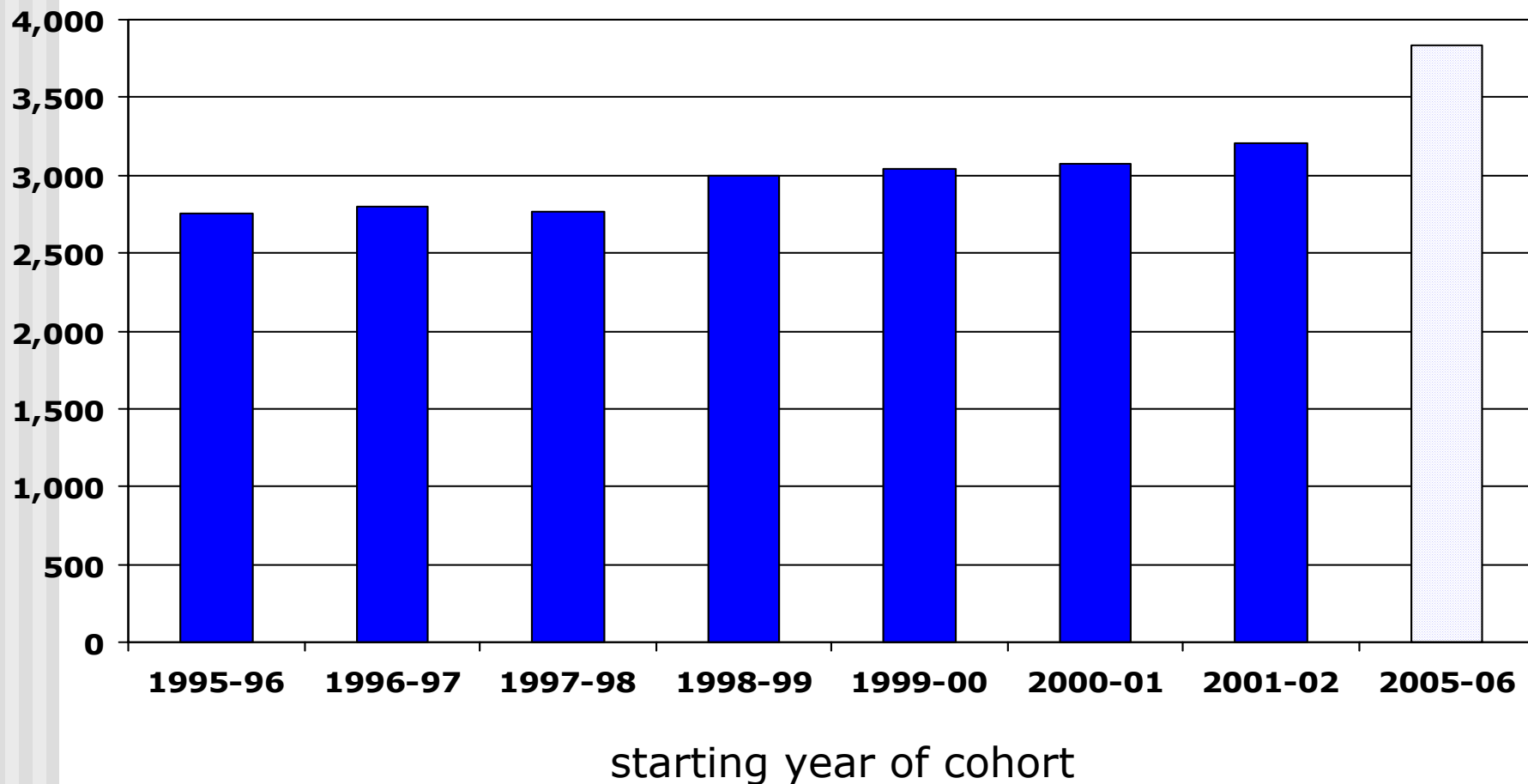
# A Conceptual Model for More Complete Assessment

---

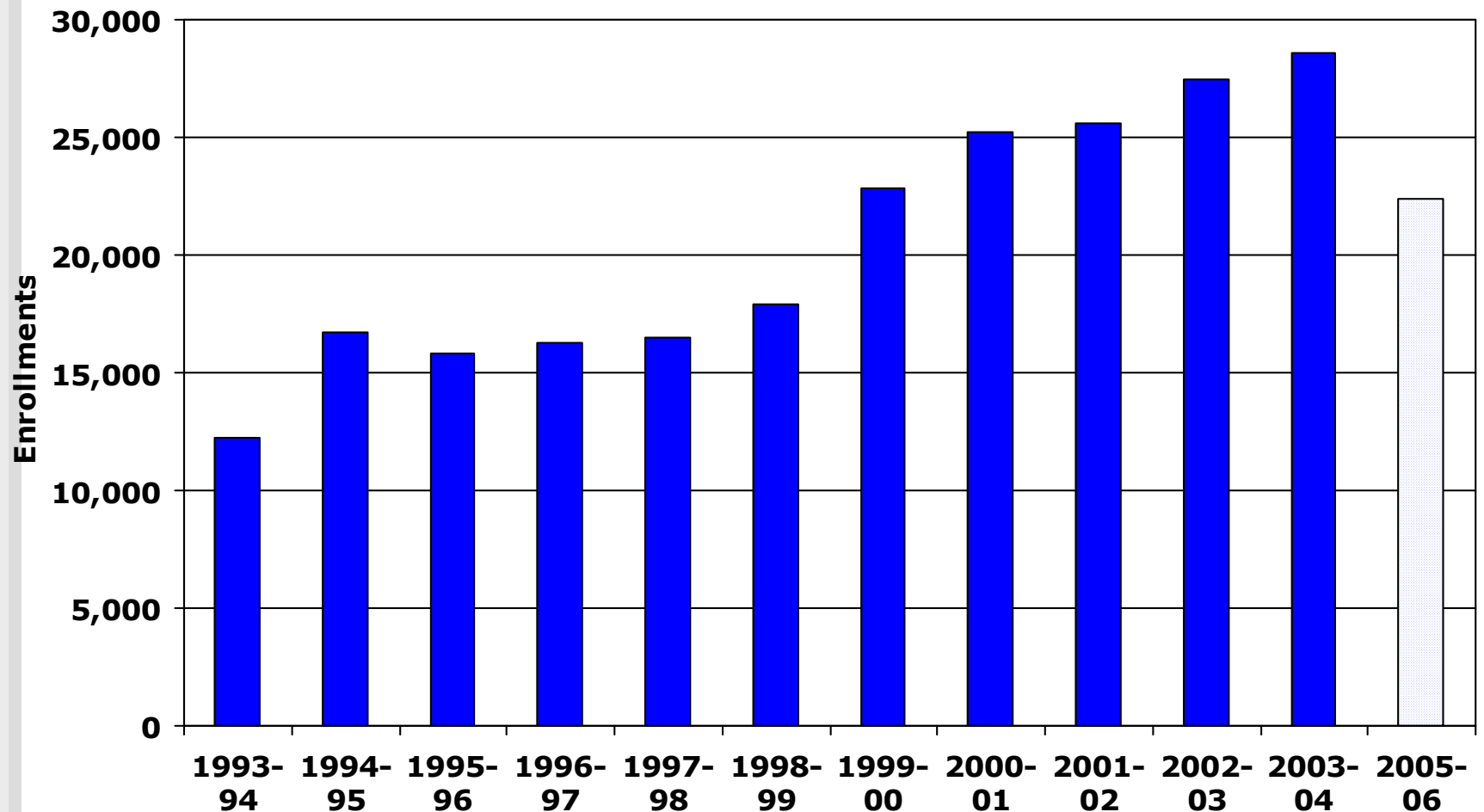


# Developmental Skills

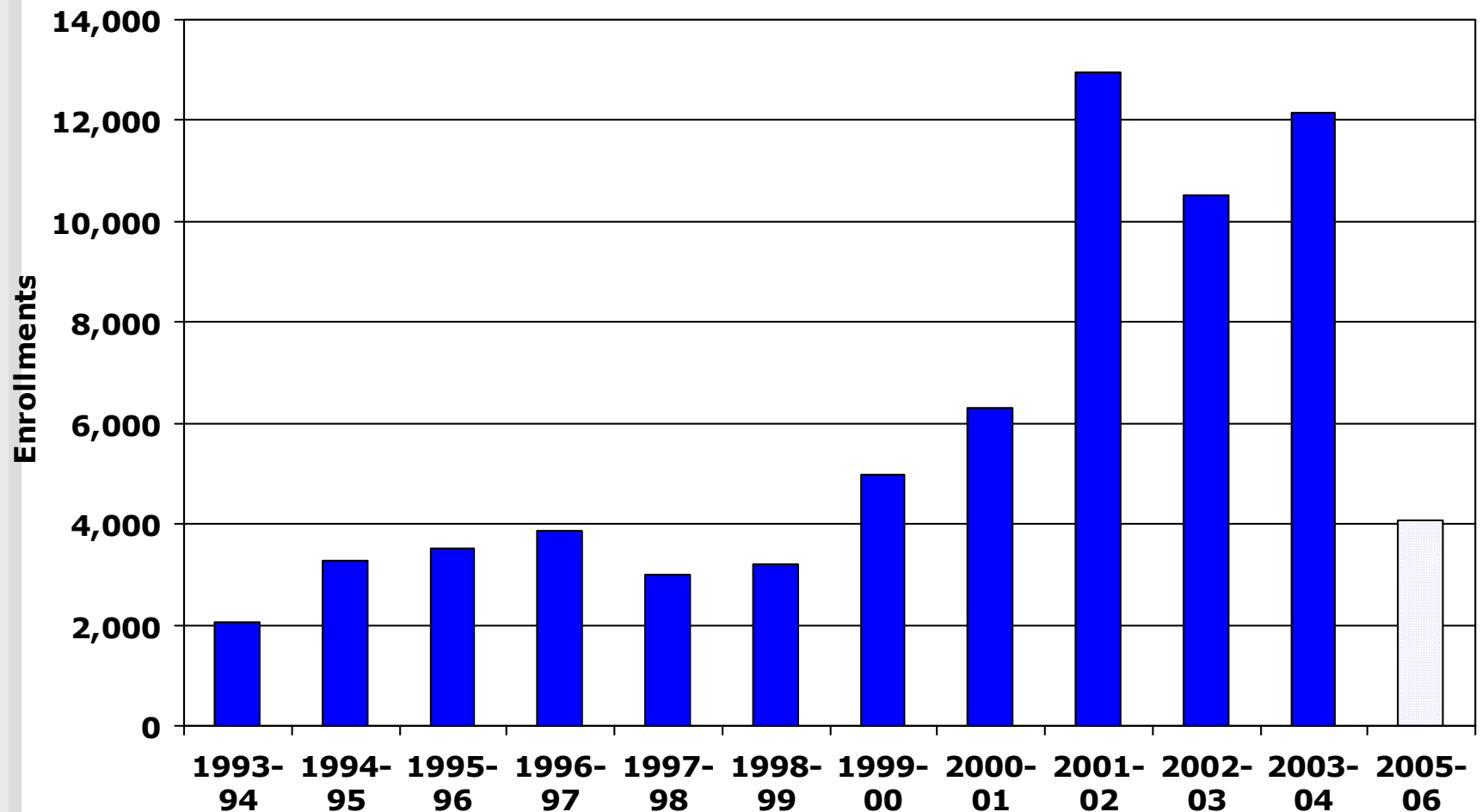
## Basic Skills Improvement (Number of Students Advancing)



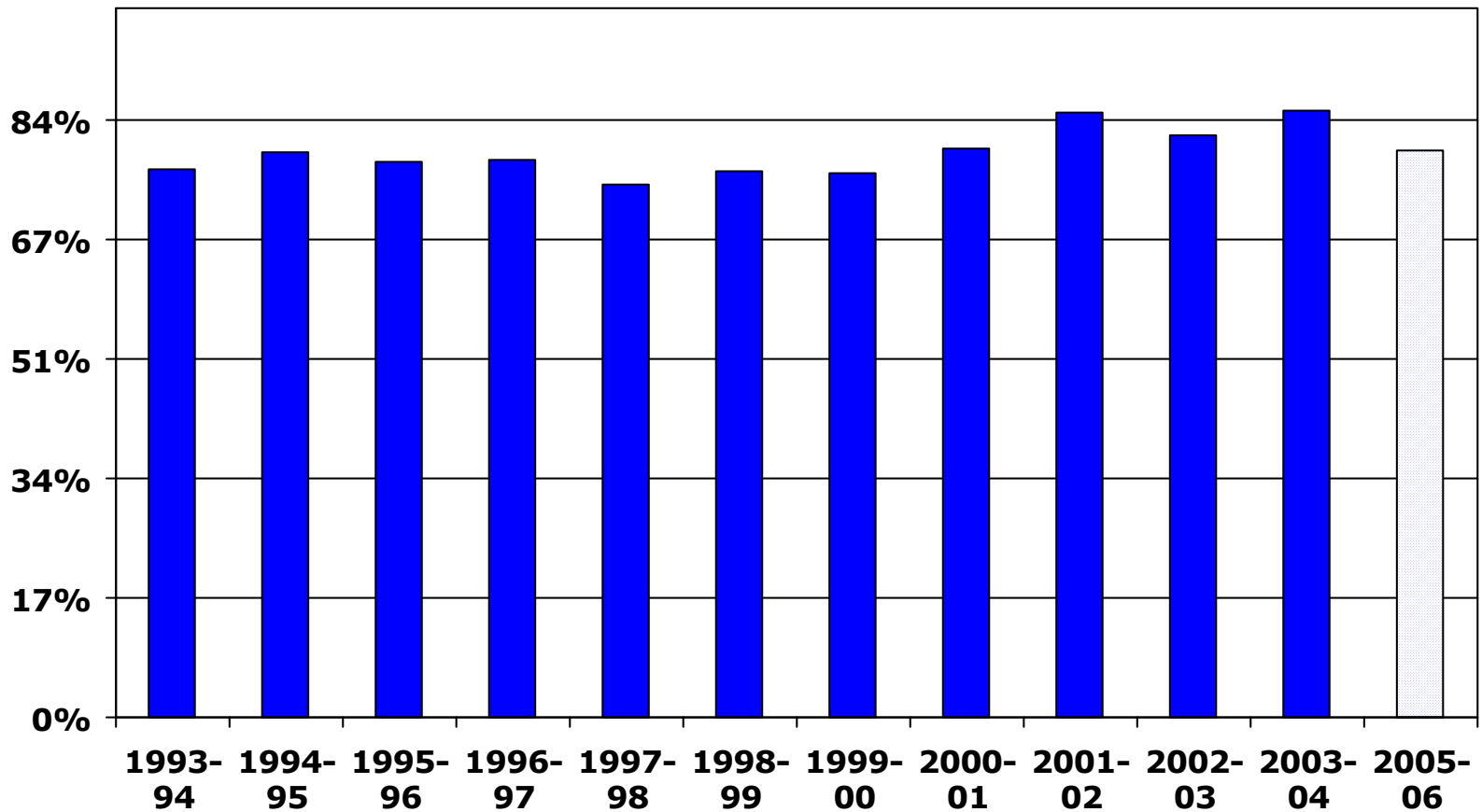
# Workforce Development Successful Course Completions (Introductory Vocational Education)



# Workforce Development Successful Course Completions (Advanced Vocational Education)



# Workforce Development Success Rate (Non-transfer Vocational Ed. Courses)



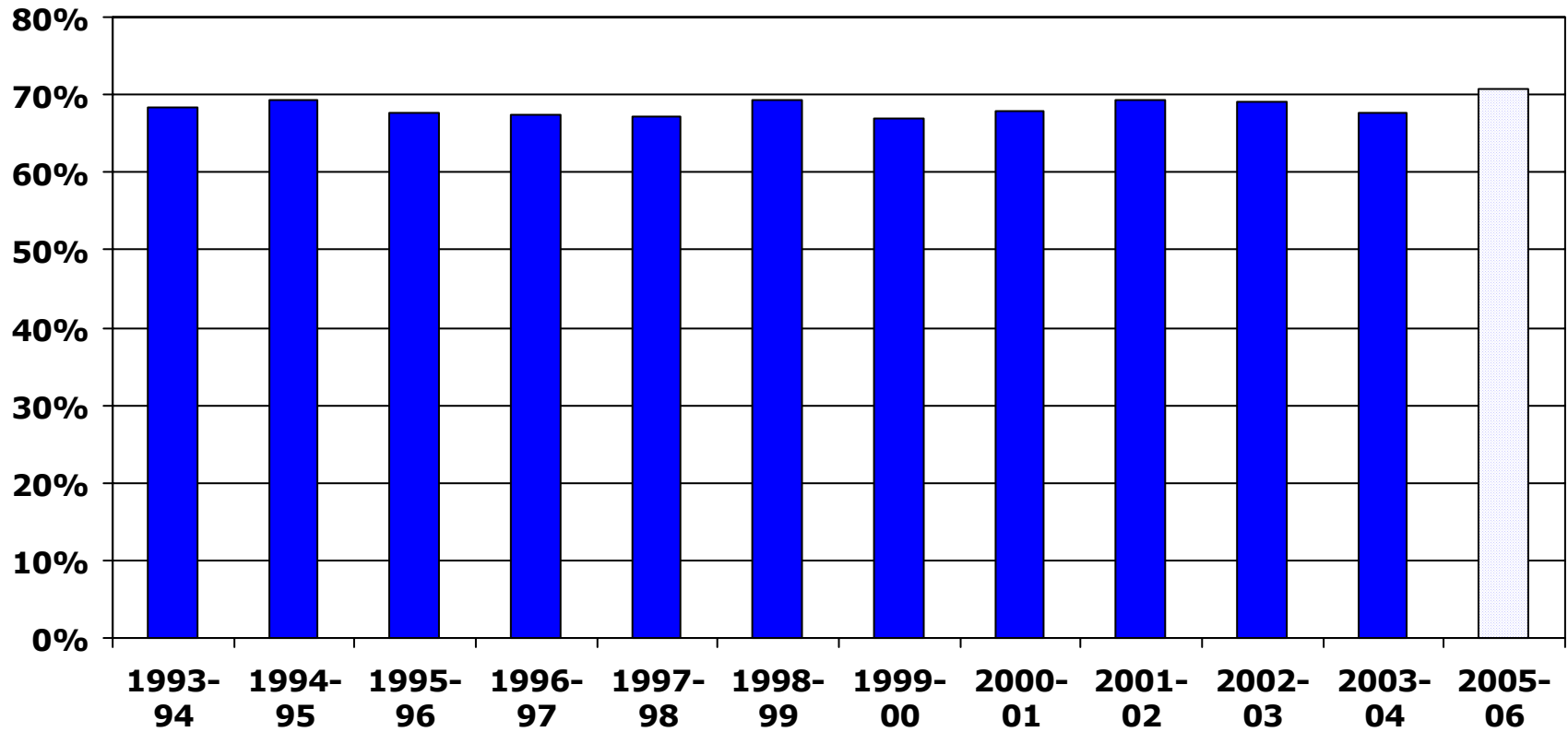
# Workforce Development Contract Education

---

	<u>1999-00</u>	<u>2000-01</u>	<u>2001-02</u>	<u>2002-03</u>	<u>2003-04</u>
Dollars	\$602,108	\$803,096	\$546,599	\$635,857	\$503,660
Employers	10	61	9	10	8
Employees	350	271	441	528	517

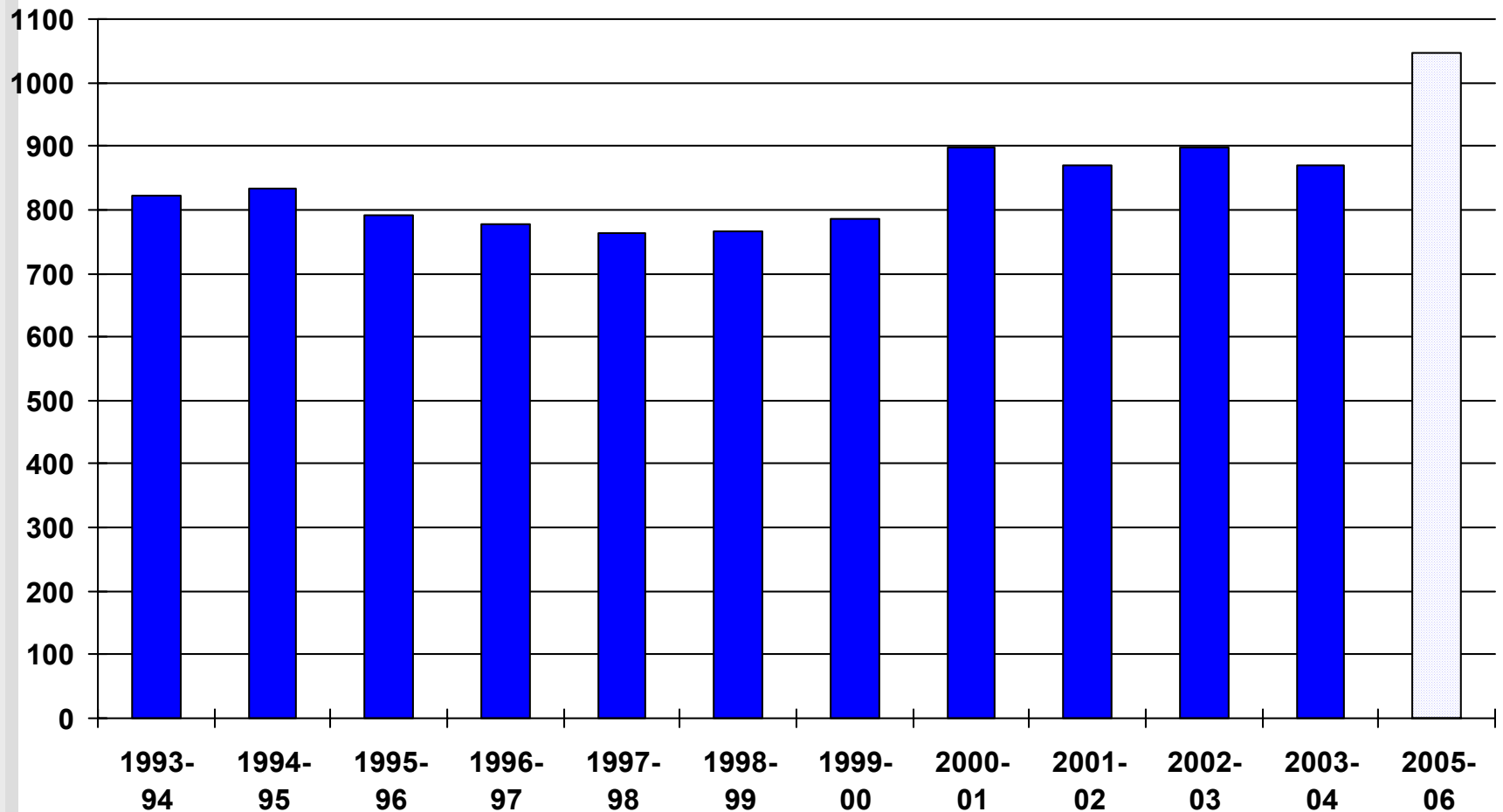


# General Education Success Rate, Transfer Courses

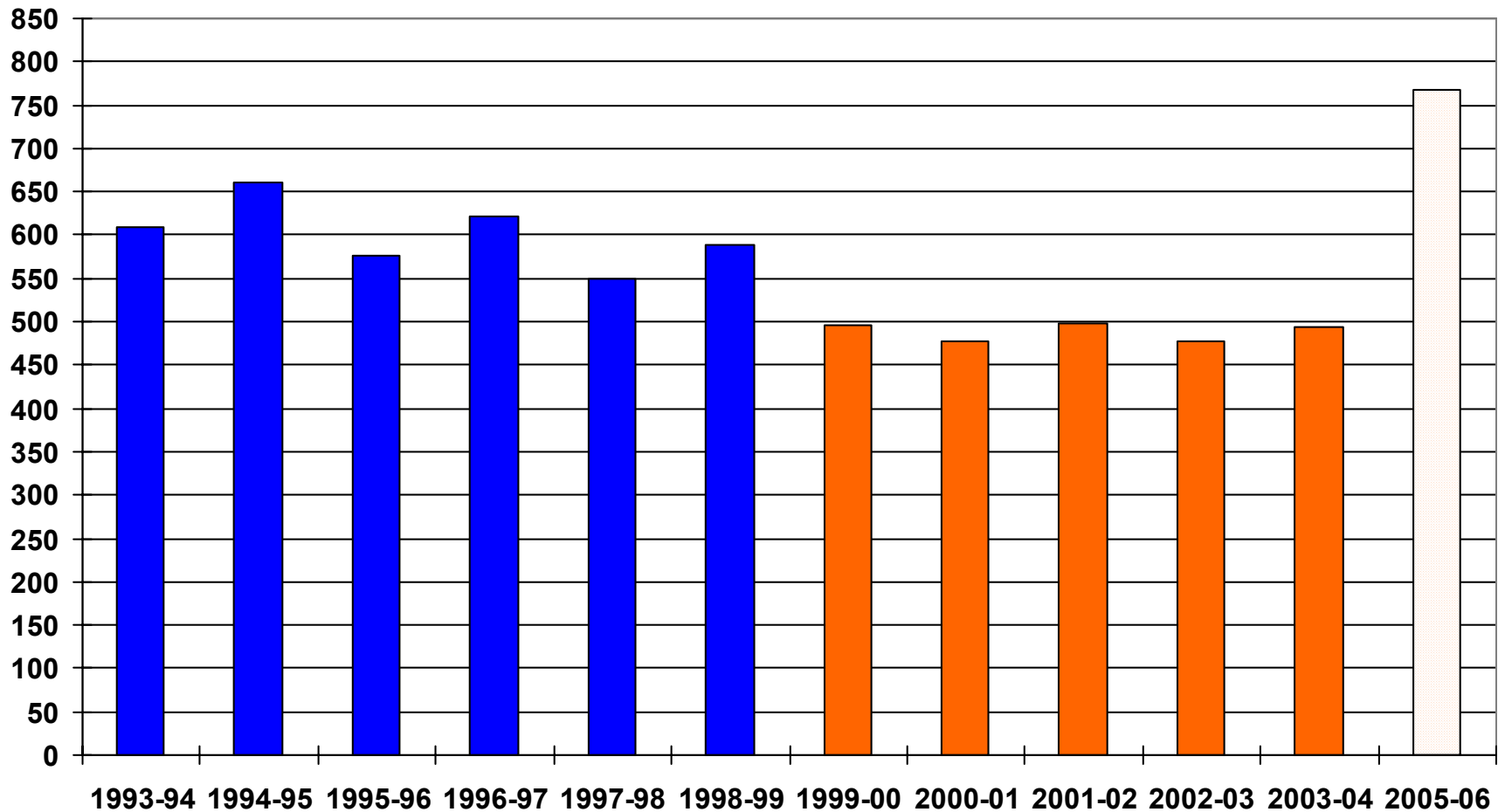


# Student Progress

## Degrees Awarded

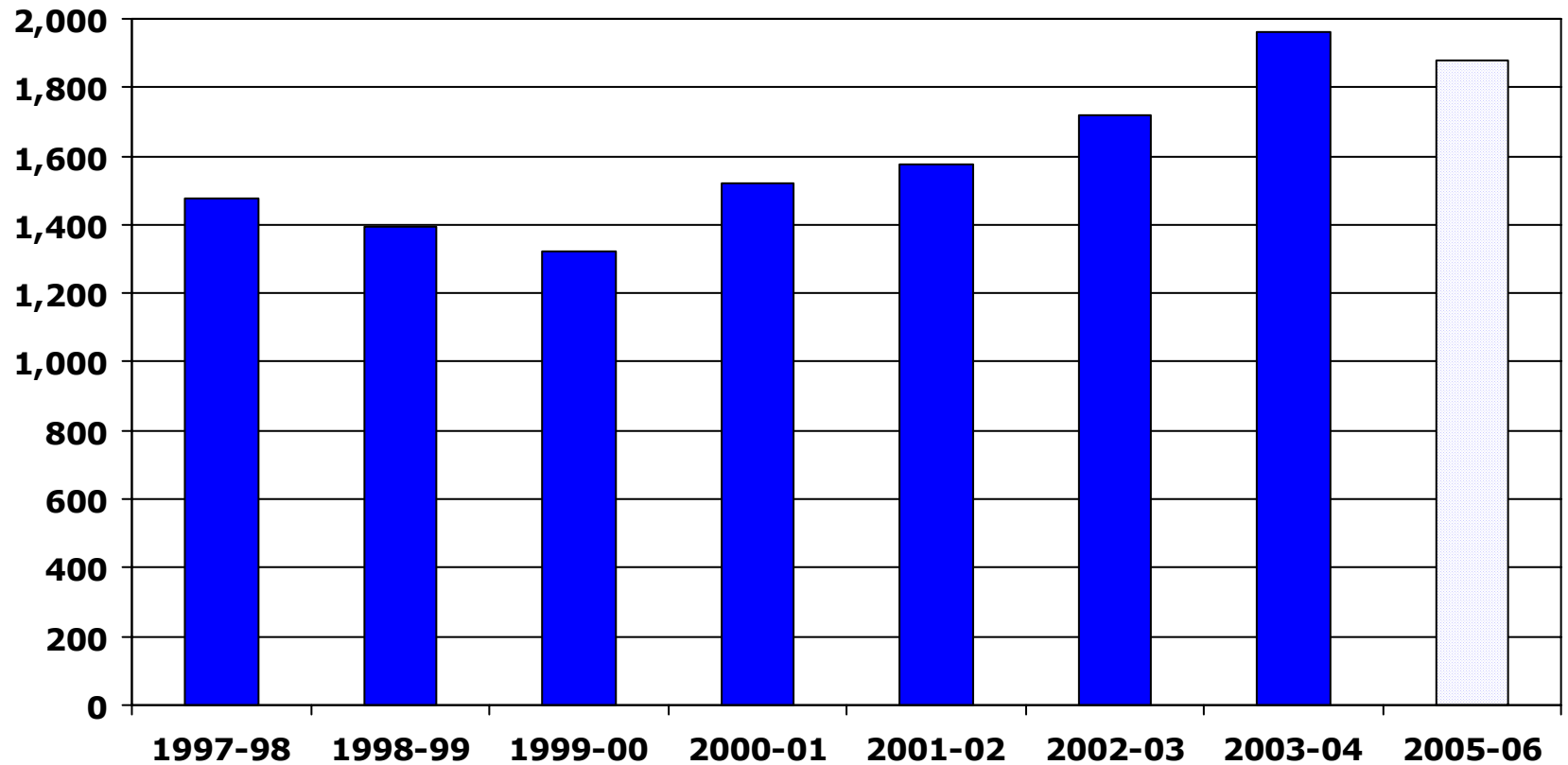


# Student Progress Certificates Awarded (18 units or more)



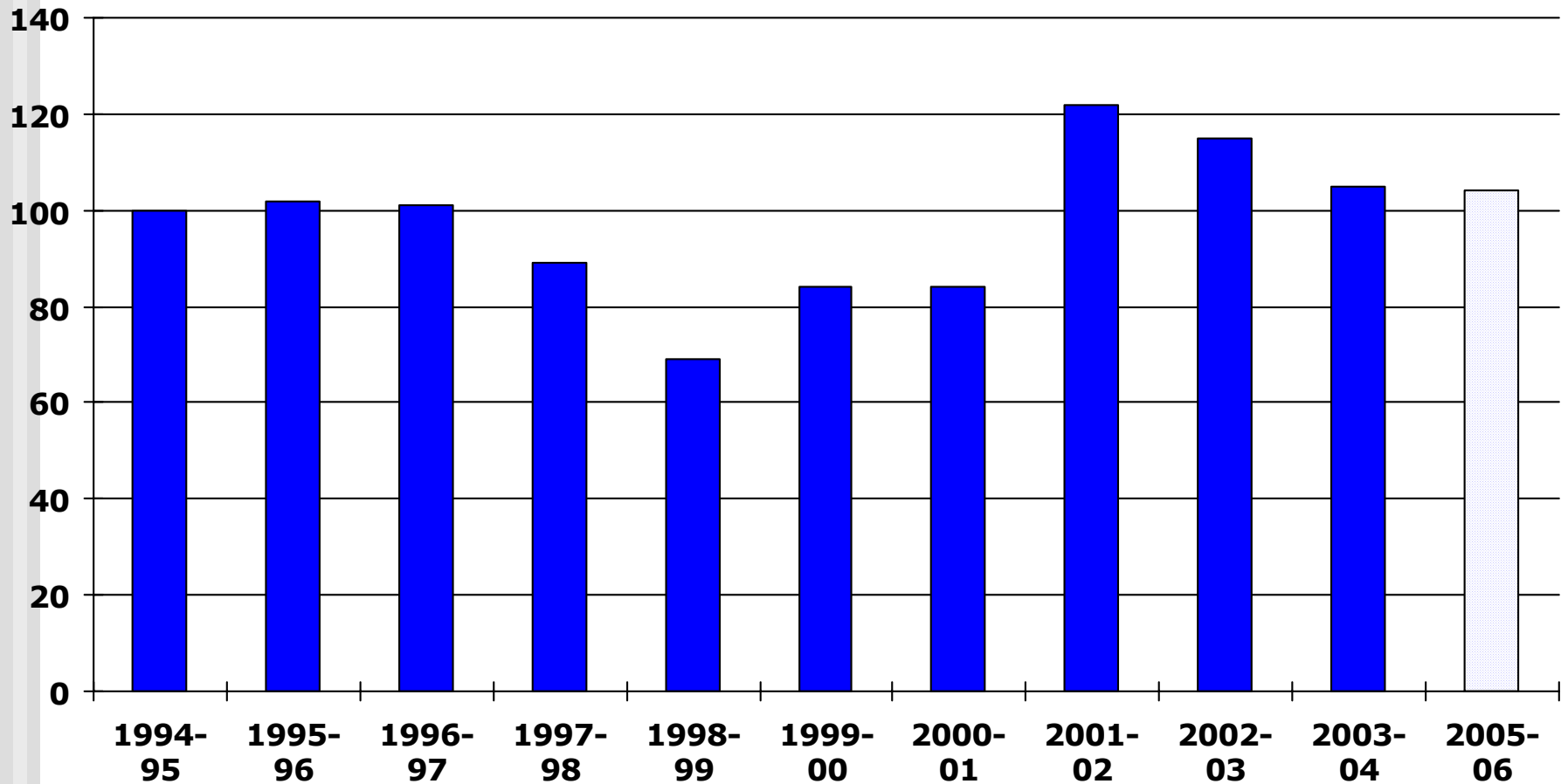
# Transfer Preparation

## Transfer Prepared



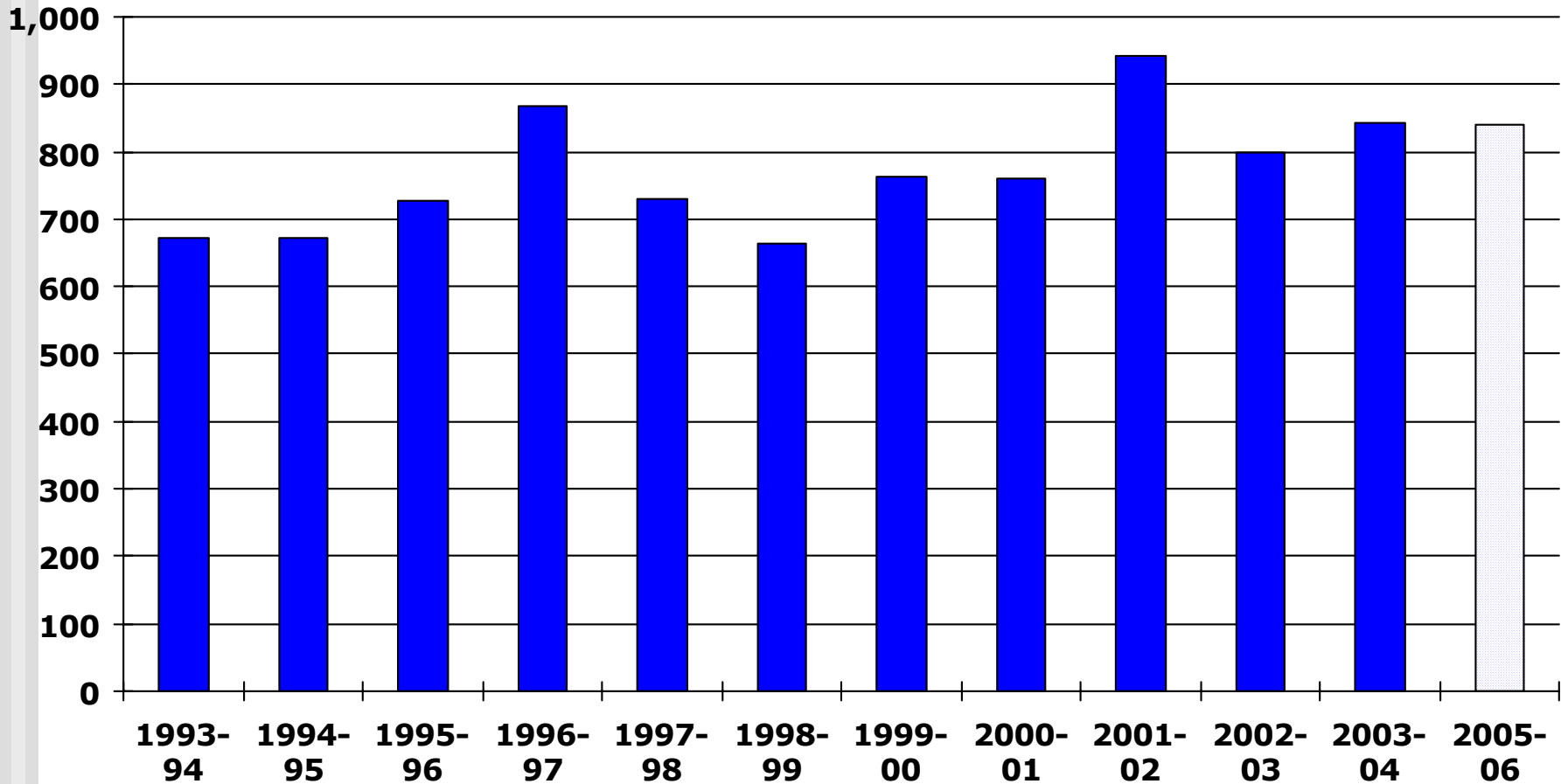
# Transfer Preparation

## Transfers to UC



# Transfer Preparation

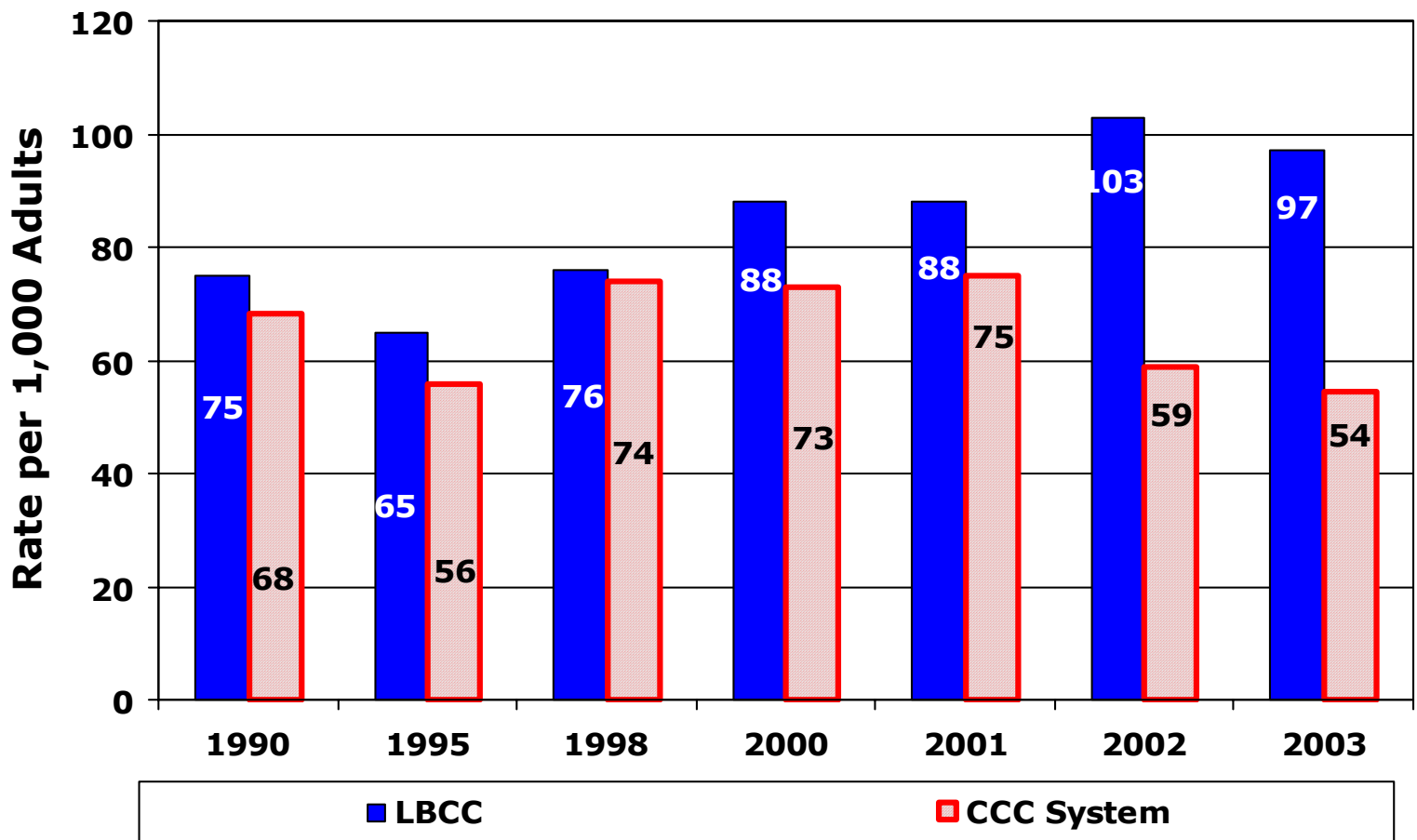
## Transfers to CSU



# Outreach

## LBCC vs CCC System

### Community Participation Rates



# Economic Development Outreach

## Regional Groups

---

- **LB Chamber of Commerce**
  - Chair, Board of Directors
  - Chamber Technology Committee
  - Board member, Women's Council
  - Board member, International Business Association
- **LB City**
  - Vice Chair, Economic Development Commission
  - Chair, Economic Development Strategic Planning Process
  - Workforce Investment Board
  - Community Development Advisory Commission
- **LB Region**
  - Youth Council
  - Board of Directors, Hispanic Chamber of Commerce
  - Board of Directors, Gateway Cities Partnership
  - School to Career Consortium (K-18)
  - Conservation Corps Board
  - Honorary Board of Governors, Leadership Long Beach
  - Board member, Long Beach Day Nurseries
  - ELLAS, Embracing Latina Leadership Alliances (High School)
- **State**
  - Economic Strategies Panel



# Economic Development Outreach Strategic Grants

---

- International Trade
- Health Care
  - Nursing
  - Elder Care
- Transportation
  - Advanced Transportation Technology
  - Intelligent Transportation Systems
- E-technology
- Small Business Development
  - HUD
- Workplace Learning Resource Center
- Vocational Technical Education Act (VTEA)- 31 faculty projects in 2004-05
- Title V Cooperative Grant with CSULB

# Summary of Outcomes

---

- At present, the areas where our goals are being met:
  - Course Success Rate
  - English Basic Skills Improvement
  - Workforce Development
  - Transfer counts
- Areas for additional focus:
  - Math Basic Skills Improvement
  - Degrees counts
  - **Certificates counts**

# Student Equity Outcomes

---

- Student Equity Plan
  - Approved Spring 2005
- Equity for All
  - Cooperative Research Project
    - USC and 10 community colleges
    - Study teams at each college
      - Academic Pathways
      - Retention and Persistence
      - Transfer Readiness
      - Excellence

# Created By

---

- Fred Trapp, Ph.D.  
Administrative Dean  
Institutional Research/Academic Services
  
- Hannah Oh  
Research Analyst